

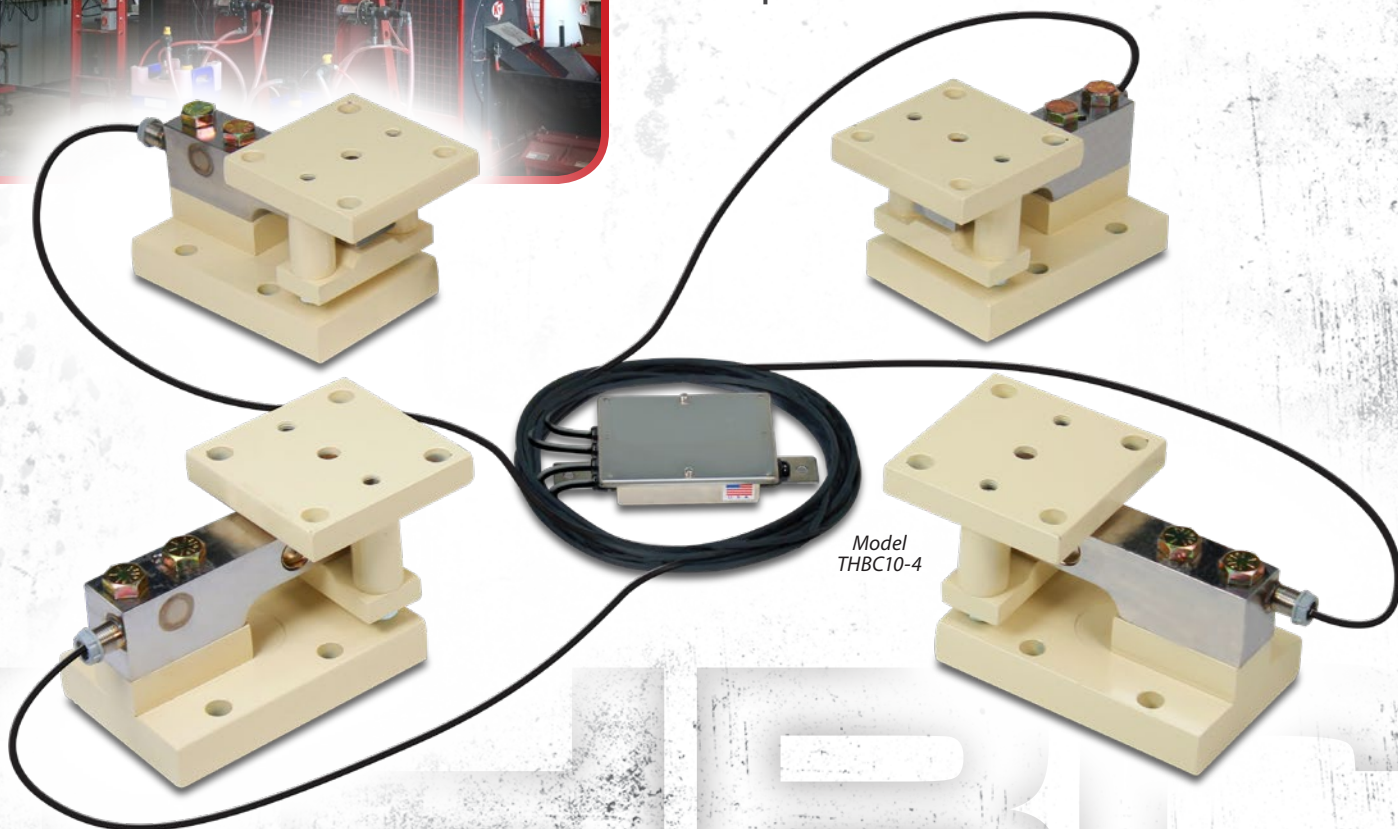
# THBC



## SELF-CHECKING LOAD CELL KITS

Load Cell Assemblies Available for Tank, Hopper, Mixer, and Conveyor Weighing

- System capacities ranging from 7,500 lb (3,400 kg) up to 200,000 lb (90,700 kg)
- Ideal for new or existing installations
- NTEP, OIML, and VCAP certified load cells
- Stainless steel or powder-painted mild steel self-checking stands
- Accommodates multi-legged tanks with up to 10 legs
- Easy-to-install, low-profile, bolt-down design
- Rugged, environmentally-sealed, stainless steel, waterproof load cells



Model  
THBC10-4

# MEDIUM-TO-HEAVY CAPACITY TANK AND HOPPER WEIGHING

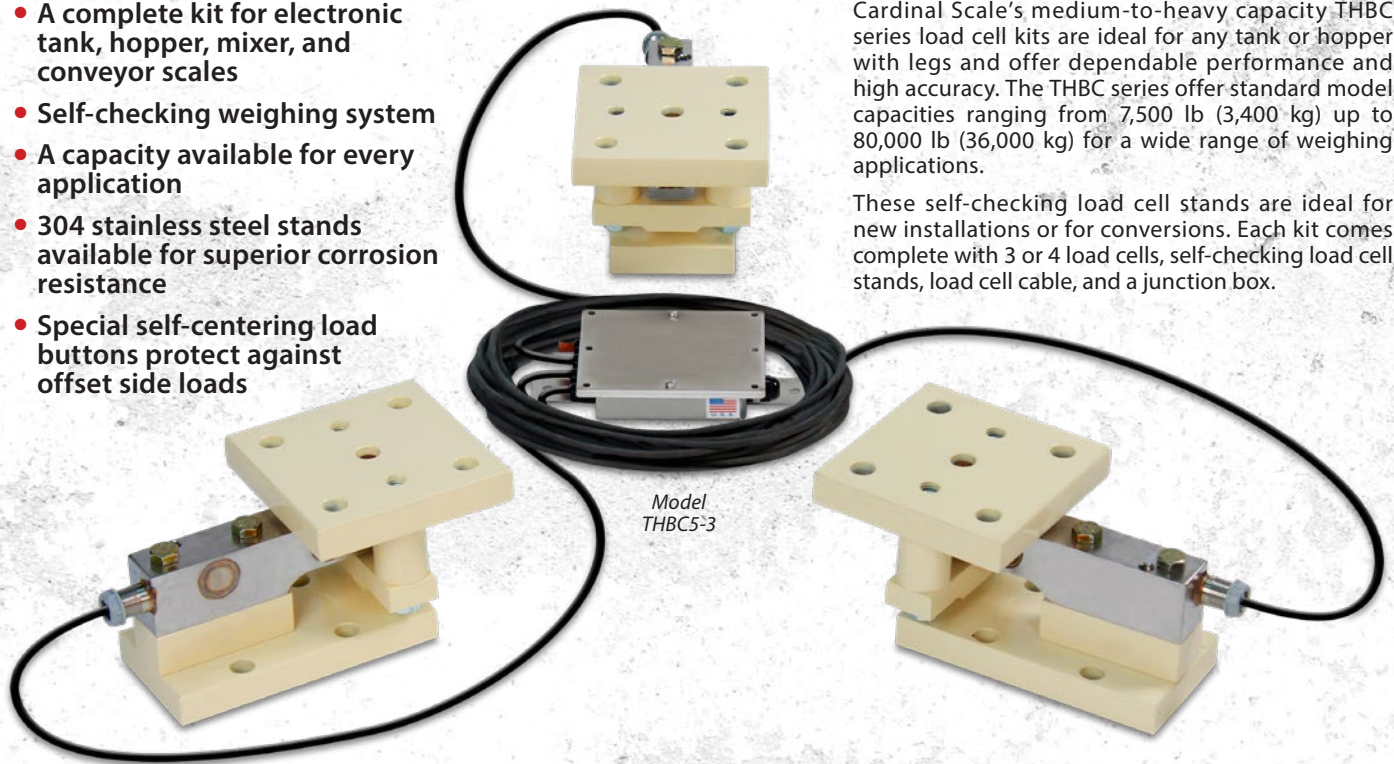
- A complete kit for electronic tank, hopper, mixer, and conveyor scales
- Self-checking weighing system
- A capacity available for every application
- 304 stainless steel stands available for superior corrosion resistance
- Special self-centering load buttons protect against offset side loads

## Cardinal Scale offers a weight capacity for every process control and vessel weighing application

Rugged construction, low-profile design, and Cardinal Scale quality are just a few reasons to consider these floor-mounted load cell kits for your tank or hopper weighing system.

Cardinal Scale's medium-to-heavy capacity THBC series load cell kits are ideal for any tank or hopper with legs and offer dependable performance and high accuracy. The THBC series offer standard model capacities ranging from 7,500 lb (3,400 kg) up to 80,000 lb (36,000 kg) for a wide range of weighing applications.

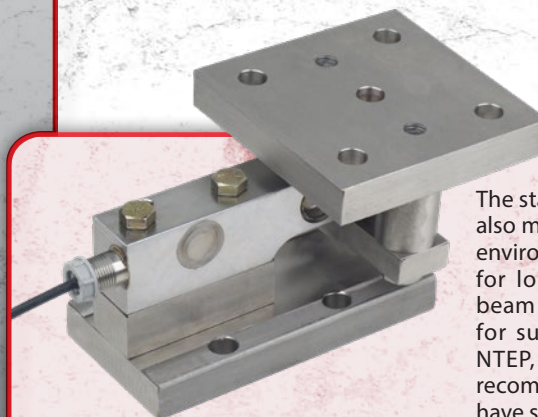
These self-checking load cell stands are ideal for new installations or for conversions. Each kit comes complete with 3 or 4 load cells, self-checking load cell stands, load cell cable, and a junction box.



## WIDE SELECTION OF INDICATORS AVAILABLE



## Self-checking load cell kits available with mild steel or stainless steel stands.



The stainless steel shear beam load cells, also manufactured by Cardinal Scale, are environmentally sealed and waterproof for long-lasting durability. The shear beam load cells feature a welded cup for superior protection and they are NTEP, OIML, and VCAP certified. It is recommended, for safety, that structures have safety chains installed on them.



# ELECTRONIC TANK SCALE SYSTEMS

## SPECIFICATIONS

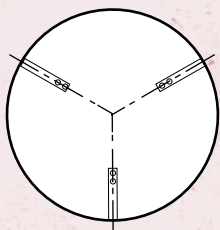
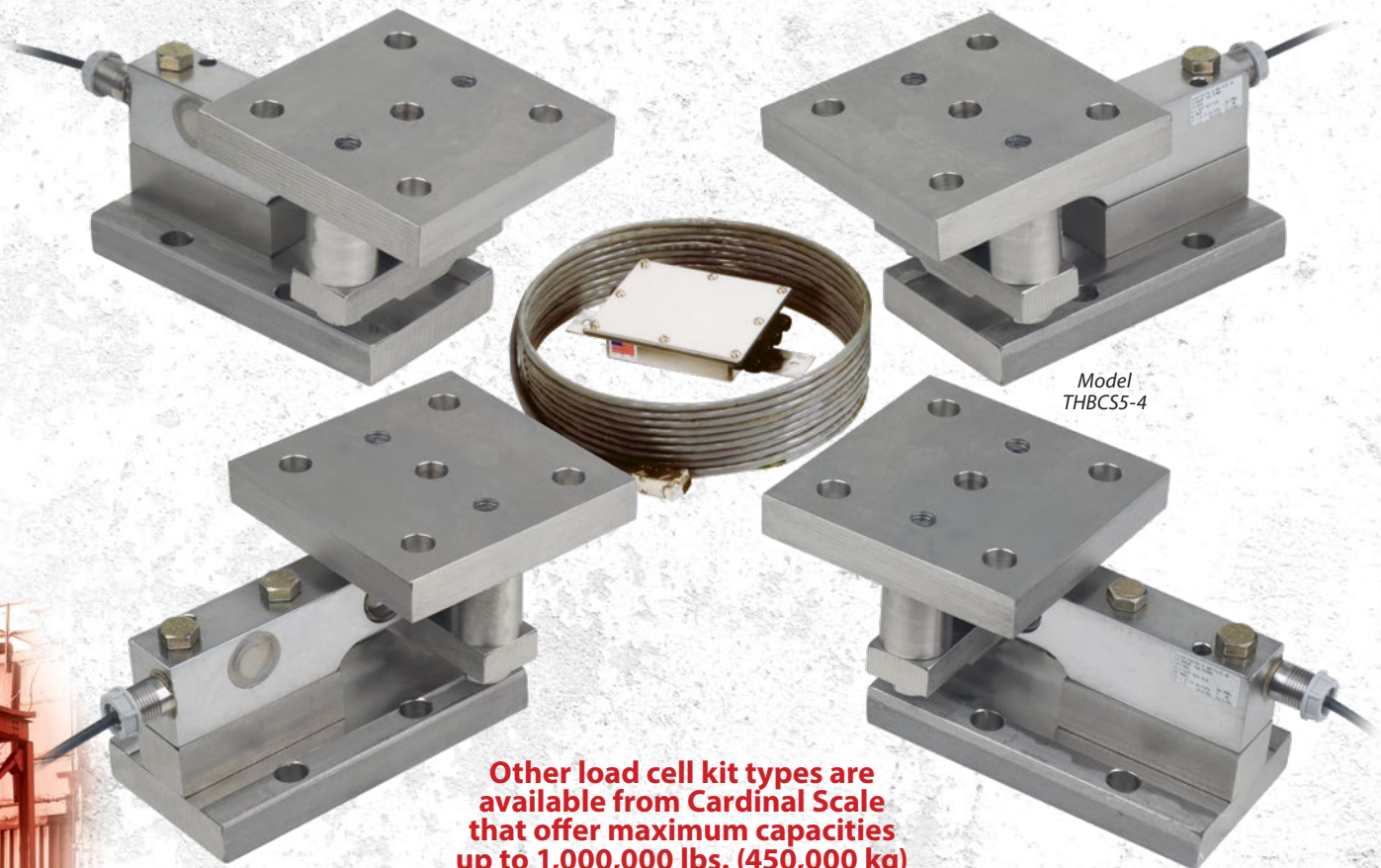
<b>LOAD CELL</b>	Type	Stainless steel SB series shear beam load cells manufactured by Cardinal Scale
	Cable	20 ft / 6 m
	Stand Type	Self-checking, bolt-down design
	Stand Construction	Stainless steel or powder-painted mild steel
<b>JUNCTION BOX</b>	Cable Length to Indicator	30 ft / 9 m with 9-pin D connector
	Type	Stainless steel 4 cell trim box

Kits consists of 3 self-checking stand assemblies, 3 stainless steel load cells, 3 mild or stainless steel steel stands and 1 stainless steel, NEMA 4 junction box.

<b>3 CELL SYSTEMS</b>	Model	Cell Capacity	System Capacity	Shipping Weight
		<b>MILD STEEL</b>	THBC2.5-3	2,500 lb - 1,135 kg
	THBC5-3	5,000 lb - 2,270 kg	15,000 lb - 6,805 kg	120 lb / 54 kg
	THBC10-3	10,000 lb - 4,535 kg	30,000 lb - 13,610 kg	180 lb / 82 kg
	THBC20-3	20,000 lb - 9,070 kg	60,000 lb - 27,215 kg	190 lb / 86 kg
<b>STAINLESS STEEL</b>	THBCS2.5-3	2,500 lb - 1,135 kg	7,500 lb - 3,405 kg	120 lb / 54 kg
	THBCS5-3	5,000 lb - 2,270 kg	15,000 lb - 6,805 kg	120 lb / 54 kg
	THBCS10-3	10,000 lb - 4,535 kg	30,000 lb - 13,610 kg	180 lb / 82 kg
	THBCS20-3	20,000 lb - 9,070 kg	60,000 lb - 27,215 kg	190 lb / 86 kg

Kits consists of 4 self-checking stand assemblies, 4 stainless steel load cells, 4 mild or stainless steel steel stands and 1 stainless steel, NEMA 4 junction box. Load Cell NTEP No. 87-059A1.

<b>4 CELL SYSTEMS</b>	Model	Cell Capacity	System Capacity	Shipping Weight
		<b>MILD STEEL</b>	THBC2.5-4	2,500 lb - 1,135 kg
	THBC5-4	5,000 lb - 2,270 kg	20,000 lb - 9,075 kg	160 lb / 73 kg
	THBC10-4	10,000 lb - 4,535 kg	40,000 lb - 18,145 kg	240 lb / 109 kg
	THBC20-4	20,000 lb - 9,070 kg	80,000 lb - 36,290 kg	250 lb / 113 kg
<b>STAINLESS STEEL</b>	THBCS2.5-4	2,500 lb - 1,135 kg	10,000 lb - 4,540 kg	160 lb / 73 kg
	THBCS5-4	5,000 lb - 2,270 kg	20,000 lb - 9,075 kg	160 lb / 73 kg
	THBCS10-4	10,000 lb - 4,535 kg	40,000 lb - 18,145 kg	240 lb / 109 kg
	THBCS20-4	20,000 lb - 9,070 kg	80,000 lb - 36,290 kg	250 lb / 113 kg

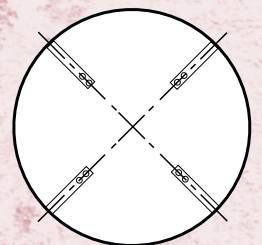


3-Mount Circular

*By purchase of this tank scale kit, the customer confirms that a qualified engineer has determined that the vessel to be used is structurally sound and capable of being supported by three or four points when filled to capacity.*



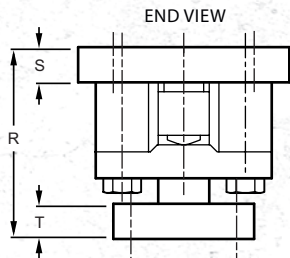
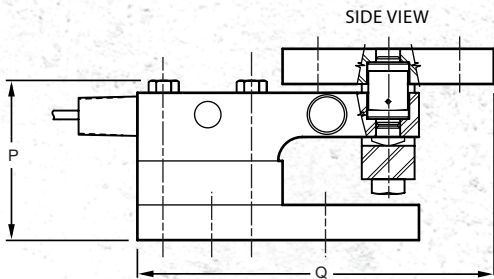
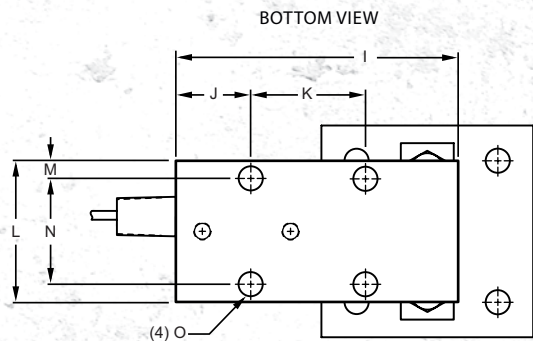
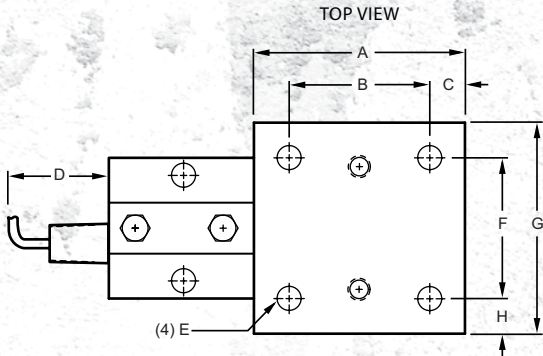
4-Mount Square



4-Mount Circular

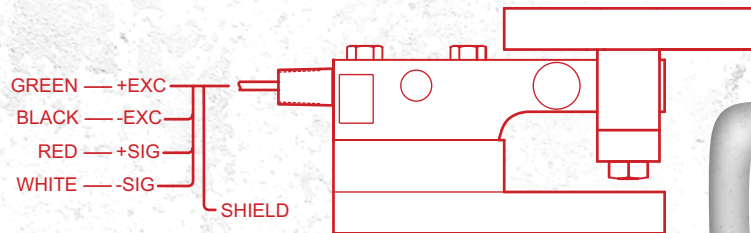
# THBC

Load Cell Assemblies Available  
for Tank, Hopper, Mixer, and  
Conveyor Weighing



## SELF-CHECKING LOAD CELL KITS

WIRING DIAGRAM



		THBC Dimensions 2,500 / 5,000-lb (1,134 / 2,268-kg) Capacities		THBC Dimensions 10,000 / 20,000-lb (4,536 / 9,072-kg) Capacities	
		INCHES	MM	INCHES	MM
TOP	A	6.0	152.4	6.0	152.4
	B	4.0	101.6	4.5	114.3
	C	1.0	25.4	0.8	19.1
	D	2.0	50.8	2.0	50.8
	E	∅0.7	∅17.5	∅0.8	∅19.8
	F	4.0	101.6	4.5	114.3
	G	6.0	152.4	6.0	152.4
	H	1.0	25.4	0.8	19.1
BOTTOM	I	8.0	203.2	9.0	228.6
	J	2.1	54.0	2.0	50.8
	K	3.3	82.6	4.0	101.6
	L	4.0	101.6	6.0	152.4
	M	0.5	12.7	0.8	19.1
	N	3.0	76.2	4.5	114.3
SIDE	O	∅0.7	∅17.5	∅0.8	∅19.8
	P	4.8	120.7	6.0	153.2
END	Q	10.1	257.2	11.0	279.4
	R	5.4	138.1	6.4	164.1
	S	1.0	25.4	1.0	25.4
	T	1.0	25.4	1.5	37.8

Cardinal Scale reserves the right to improve, enhance,  
or modify features and specifications without prior notice.

**Cardinal**  
Cardinal Scale Manufacturing Co.  
203 E. Daugerty, Webb City, MO 64870 USA  
Ph: 417-673-4631 or 800-441-4237 • Fax: 417-673-5001  
[www.CardinalScale.com](http://www.CardinalScale.com)

Mobile: [m.cardinalscale.com](http://m.cardinalscale.com)

**SOLD BY:**